



SMITH INT'L GULF SERVICES (DRILCO), U.S.A.  
Drilling & Drilling equipment.

**AGENCIES**

**BRITISH ROPES  
U.K**



**Blue Strand  
WIRE ROPES**

**BRIDON ROPES  
U.K**



**F. E. M. A.** S. p. A. - ITALY  
FABBRICA ELETTRO MECCANICA ADRIATICA  
Welding Machine & Equipments

**BAND-IT OUDAILLE**

BAND-IT HOUDLE, U.S.A.  
Band-it Tools, Bands & Buckles

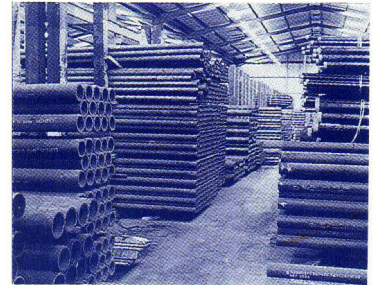


**HUGHES OFFSHORE ROPES LTD.**  
Lifting Accessories - U.K.

**WE HAVE THE FOLLOWING MATERIALS READY IN STOCK WITH COMPETITIVE PRICES.**

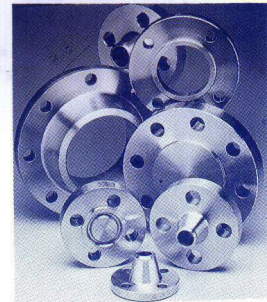
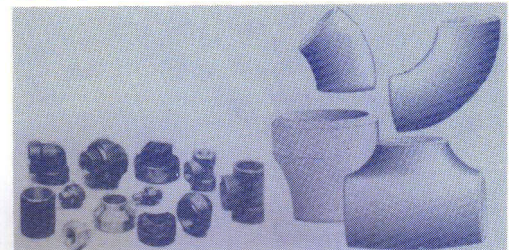
**PIPES & TUBES**

CARBON STEEL : ASTM API 5L GR-B, ASTM A-106, ASTM A333 GR-3 & 6.  
STAINLESS STEEL : TYPE 304, 304L, 316 & 316L.  
GALVANIZED : BS 1387.  
CONSTRUCTION : Seamless & Welded (ERW).  
SCHEDULE : 10, 20, 30, 40, 80, 120, 160 & XXH.  
SIZES : 1/4" Upto 60"



**FITTINGS**

- ITEMS : ELBOWS, TEES, REDUCER, CAP.  
CARBON STEEL : ASTM A234 GR-"WPB", ANSI B16.9, ASTM A420-WPL3 & 6  
STAINLESS STEEL : TYPE 304, 304L, 316 & 316L.  
SCHEDULE : 10, 20, 40, 60, 80, 120 & XXH.  
CONSTRUCTION : Seamless & Welded (ERW) Butt Weld Fittings.  
SIZES : 1/4" Upto 48"
- ITEMS : ELBOWS, TEES, REDUCER, CAPS, PLUGS,  
REDUCING BUSH, COUPLINGS & NIPPLES.  
FORGED CARBON STEEL : ASTM A-105, ASTM A350 LF2 & 3.  
STAINLESS STEEL : ASTM 304, 304L, 316 & 316L.  
GALVANIZED : BS STANDARD  
MALEABLE IRON : ASTM A197  
CLASS : 150, 300, 2000, 3000 & 6000 PSI.  
TYPE : SCREWED & SOCKETWELD.  
SIZES : 1/8" Upto 6"
- ITEMS : COMPRESSION FITTINGS, ELBOWS, TEES & CONNECTORS.  
MATERIALS : BRASS STAINLESS STEEL.  
SIZES : 1/8" to 2" OR 3 MM TO 50 MM.

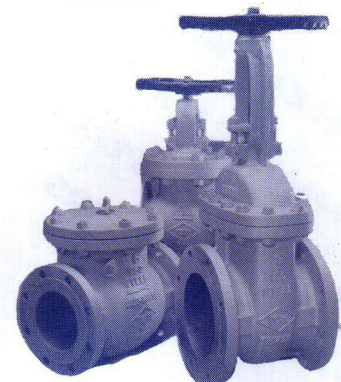


**FLANGES**

ITEMS : WELDNECK, SLIP-ON, BLIND & SCREWED.  
CARBON STEEL : ASTM A 105/A 350 LF2/ANSI, BS, DIN & ASA.  
STAINLESS STEEL : 304, 304L, 316, 316L.  
PRESSURE RATINGS : 125, 150, 300, 600, 900, 1500, 2500 & 9000 PSI.

**VALVES**

- ITEMS : GATE, GLOBE & CHECK FLANGED TYPE.  
PRESSURE RATINGS : 150, 300, 600 PSI  
MATERIAL : CAST STEEL TO ASTM A216 "WCB" & "LCB".  
CAST IRON TO A126 CLASS-B.  
SIZES : 1 1/2" Upto 24".
- ITEMS : GATE, GLOBE, CHECK, BALL, NEEDLE & RELIEF SCREWED AND SOCKETWELD ENDS.  
PRESSURE RATING : 150, 300, 600, 800, 1000, 2000, 3000 & 5000 PSI.  
MATERIAL : FORGED CARBON STEEL TO ASTM A-105, ASTM A350 LF2 & 3.  
STAINLESS STEEL TO 304, 304L, 316 & 316L.  
BRASS BRONZE TO B62.  
SIZES : 1/4" Upto 6".





3. ITEMS : BUTTERFLY VALVES.  
MATERIAL : CAST IRON & CAST STEEL.  
SIZES : 1" UPTO 24".

#### **BOLT & NUTS**

STUD BOLTS WITH NUTS : ASTM A193-B7 & L7, NUTS  
A 194-2H & GR-4.  
HEX HEAD BOLT WITH NUT : GRADE 8-8, STAINLESS STEEL,  
BRASS, ETC.  
SIZES : 1/2" UPTO 3" DIA.

#### **GASKETS**

ITEMS : ASBESTOS, SPIRAL WOUND, RUBBER  
NEOPRENE RUBBER AND CARBON STEEL / STAINLESS  
STEEL RING GASKETS.  
SIZES : 1/2" UPTO 60".

#### **MARINE STEEL PLATES**

FOR SHIPBUILDING GR-A, DIN 1543 TO DN 50049-3-IC.  
THICKNESS - 6MM, 10MM & 12MM.

#### **PLATES**

MILD STEEL TO BS4360 GR-43A, THICKNESS  
1MM UP TO 100 MM. & 200 MM.  
STAINLESS STEEL TO SUS 304, 304L, 316 & 316L  
THICKNESS - 0.5MM UP TO 25MM.

#### **STRUCTURAL STEEL**

ITEMS : ANGLES, CHANNELS, H-BEAMS, I-BEAMS, FLAT  
BARS & HOLLOW SECTIONS.  
MATERIAL : BS4360 GR-43A & ST37-2.

#### **ROUND BARS**

MILD STEEL TO SS-41  
CARBON STEEL TO EN-8 & EN24.  
STAINLESS STEEL TO 304 & 316.  
BRASS TO BS287 BZ121.  
BRONZE TO BS1400 LG2.  
CAST IRON TO GRADE 250.  
SIZES : 1/4" UP TO DIA. 52".

#### **WIRE ROPES**

STEEL, GALVANIZED AND STAINLESS STEEL.  
SIZES : 1/4" UP TO 3" DIA.

#### **WEB SLINGS**

NYLON, SIZES FROM 2" UP TO 8" WIDTH.

#### **GALVANIZED WIRE SLINGS:**

SIZE: 1 1/2" X 23 FT LONG BOTH SIDES SOFT - EYE 18",  
READY IN STOCK WITH CERTIFICATE.

#### **GRATING**

GALVANIZED STEEL SERRATED LOAD - BEARING BARS  
TO BS4592.  
DEPTH : 25MM, 30MM & 32MM.  
DIM : 1MTR. X 6 MTR.

#### **WHITE METAL**

GRADE ASTM B-23-8 1 KG. BLOCK.

#### **BEARING METAL**

GRADE V841 - 1 KG BLOCK.

#### **LEAD BLOCK**

7.5 KGS. BLOCK, DIM: 1 1/4" HT. X 3" WIDE X 12" LONG.

#### **ALUMINIUM BLOCKS**

35 KG., DIM: 21" LONG X 8" WIDE X 5" THICK.

#### **ZINC ANODES**

3 KG., 5 KG., 10 KG., 17 KG. & 25 KG. BLOCKS FOR  
CATHODIC PROTECTION

#### **SHAFT COUPLING**

BORE DIA 1/2" TO 6"

#### **LIFTING MAGNET**

ELECTRIC OPERATED 1 TON, 2 TON & 10 TON.

#### **WELDING MACHINE**

DC, RECTIFIED, 3 PHASE, 220 / 380V, 50 HZ 500 AMPS.

#### **WATER PUMP**

FOR MARINE / INDUSTRIAL / AGRICULTURAL RUN BY  
DIESEL OR ELECTRIC.

#### **MARINE WINCHES**

DRIVEN BY ELECTRIC, HYDRAULIC AND DIESEL ENGINE  
FROM 1 TON UP TO 150 TONS.

#### **MARINE PROPELLERS**

STAINLESS STEEL & BRONZE WITH THREE & FOUR BLADES.

#### **ANCHORS**

STOCKLESS & OTHER TYPES FROM 1/4 TON UP TO 15  
TONS.

#### **ANCHOR CHAINS**

SIZES 1/2" UP TO 3 1/2" DIA.

#### **LINK CHAINS**

GRADE - 80, SIZES 7MM UP TO 16MM DIA.

#### **SPROCKET CHAIN**

SINGLE, TWO, THREE AND FOUR WAYS.

#### **RUBBER SHEETS**

THICKNESS FROM 3/16" UP TO 1/2".

#### **LIFTING ACCESSORIES**

SHACKLES, EYE HOOKS, CHAIN SLING HOOKS, SWIVELS,  
PULLEY BLOCKS, MASTER LINKS, TURN BUCKLES,  
RIGGING SCREWS, SOCKETS ETC.

#### **PORTABLE FAN**

"SUNKY" BRAND PORTABLE FAN WITH FLEXIBLE DUCT.  
220 VOLTS

#### **BAND-IT CLAMPS**

STRIPS 1/4" . WIDTH UP TO 3/4" . WIDTH.  
BUCKLES 1/4" . UP TO 3/4" .  
MATERIAL CARBON STEEL, STAINLESS STEEL.

#### **DIESEL GENERATOR**

FOR HIRE AND SALE. FROM 10 KVA TO 300 KVA AND ABOVE

#### **DIESEL ENGINE**

SECOND HAND IN GOOD RUNNING CONDITION, OF  
DIFFERENT TYPES LIKE, CATERPILLAR, DETROIT DIESELS,  
ROLLS ROYCE, LISTER, DEUTZ, PAXMAN, WERKSPOR,  
PERKINS, CUMMINS ETC. FOR MARINE AND INDUSTRIAL  
USE.

#### **WELDING ELECTRODES**

MILD STEEL & STAINLESS STEEL  
SIZES : 2.4 MM, 3.2 MM & 4 MM.



3. ITEMS : BUTTERFLY VALVES.  
MATERIAL : CAST IRON & CAST STEEL.  
SIZES : 1" UPTO 24".

#### **BOLT & NUTS**

STUD BOLTS WITH NUTS : ASTM A193-B7 & L7, NUTS  
A 194-2H & GR-4.  
HEX HEAD BOLT WITH NUT : GRADE 8-8, STAINLESS STEEL,  
BRASS, ETC.  
SIZES : 1/2" UPTO 3" DIA.

#### **GASKETS**

ITEMS : ASBESTOS, SPIRAL WOUND, RUBBER  
NEOPRENE RUBBER AND CARBON STEEL / STAINLESS  
STEEL RING GASKETS.  
SIZES : 1/2" UPTO 60".

#### **MARINE STEEL PLATES**

FOR SHIPBUILDING GR-A, DIN 1543 TO DN 50049-3-IC.  
THICKNESS - 6MM, 10MM & 12MM.

#### **PLATES**

MILD STEEL TO BS4360 GR-43A, THICKNESS  
1MM UP TO 100 MM. & 200 MM.  
STAINLESS STEEL TO SUS 304, 304L, 316 & 316L  
THICKNESS - 0.5MM UP TO 25MM.

#### **STRUCTURAL STEEL**

ITEMS : ANGLES, CHANNELS, H-BEAMS, I-BEAMS, FLAT  
BARS & HOLLOW SECTIONS.  
MATERIAL : BS4360 GR-43A & ST37-2.

#### **ROUND BARS**

MILD STEEL TO SS-41  
CARBON STEEL TO EN-8 & EN24.  
STAINLESS STEEL TO 304 & 316.  
BRASS TO BS287 BZ121.  
BRONZE TO BS1400 LG2.  
CAST IRON TO GRADE 250.  
SIZES : 1/4" UP TO DIA. 52".

#### **WIRE ROPES**

STEEL, GALVANIZED AND STAINLESS STEEL.  
SIZES : 1/4" UP TO 3" DIA.

#### **WEB SLINGS**

NYLON, SIZES FROM 2" UP TO 8" WIDTH.

#### **GALVANIZED WIRE SLINGS:**

SIZE: 1 1/2" X 23 FT LONG BOTH SIDES SOFT - EYE 18",  
READY IN STOCK WITH CERTIFICATE.

#### **GRATING**

GALVANIZED STEEL SERRATED LOAD - BEARING BARS  
TO BS4592.  
DEPTH : 25MM, 30MM & 32MM.  
DIM : 1MTR. X 6 MTR.

#### **WHITE METAL**

GRADE ASTM B-23-8 1 KG. BLOCK.

#### **BEARING METAL**

GRADE V841 - 1 KG BLOCK.

#### **LEAD BLOCK**

7.5 KGS. BLOCK, DIM: 1 1/4" HT. X 3" WIDE X 12" LONG.

#### **ALUMINIUM BLOCKS**

35 KG., DIM: 21" LONG X 8" WIDE X 5" THICK.

#### **ZINC ANODES**

3 KG., 5 KG., 10 KG., 17 KG. & 25 KG. BLOCKS FOR  
CATHODIC PROTECTION

#### **SHAFT COUPLING**

BORE DIA 1/2" TO 6"

#### **LIFTING MAGNET**

ELECTRIC OPERATED 1 TON, 2 TON & 10 TON.

#### **WELDING MACHINE**

DC, RECTIFIED, 3 PHASE, 220 / 380V, 50 HZ 500 AMPS.

#### **WATER PUMP**

FOR MARINE / INDUSTRIAL / AGRICULTURAL RUN BY  
DIESEL OR ELECTRIC.

#### **MARINE WINCHES**

DRIVEN BY ELECTRIC, HYDRAULIC AND DIESEL ENGINE  
FROM 1 TON UP TO 150 TONS.

#### **MARINE PROPELLERS**

STAINLESS STEEL & BRONZE WITH THREE & FOUR BLADES.

#### **ANCHORS**

STOCKLESS & OTHER TYPES FROM 1/4 TON UP TO 15  
TONS.

#### **ANCHOR CHAINS**

SIZES 1/2" UP TO 3 1/2" DIA.

#### **LINK CHAINS**

GRADE - 80, SIZES 7MM UP TO 16MM DIA.

#### **SPROCKET CHAIN**

SINGLE, TWO, THREE AND FOUR WAYS.

#### **RUBBER SHEETS**

THICKNESS FROM 3/16" UP TO 1/2".

#### **LIFTING ACCESSORIES**

SHACKLES, EYE HOOKS, CHAIN SLING HOOKS, SWIVELS,  
PULLEY BLOCKS, MASTER LINKS, TURN BUCKLES,  
RIGGING SCREWS, SOCKETS ETC.

#### **PORTABLE FAN**

"SUNKY" BRAND PORTABLE FAN WITH FLEXIBLE DUCT.  
220 VOLTS

#### **BAND-IT CLAMPS**

STRIPS 1/4" . WIDTH UP TO 3/4" . WIDTH.  
BUCKLES 1/4" . UP TO 3/4" .  
MATERIAL CARBON STEEL, STAINLESS STEEL.

#### **DIESEL GENERATOR**

FOR HIRE AND SALE. FROM 10 KVA TO 300 KVA AND ABOVE

#### **DIESEL ENGINE**

SECOND HAND IN GOOD RUNNING CONDITION, OF  
DIFFERENT TYPES LIKE, CATERPILLAR, DETROIT DIESELS,  
ROLLS ROYCE, LISTER, DEUTZ, PAXMAN, WERKSPOR,  
PERKINS, CUMMINS ETC. FOR MARINE AND INDUSTRIAL  
USE.

#### **WELDING ELECTRODES**

MILD STEEL & STAINLESS STEEL  
SIZES : 2.4 MM, 3.2 MM & 4 MM.



**MECHANICAL SEALS:**

FOR ALL TYPES OF PUMPS,  
SIZE: 8MM UP TO 38MM AND 3/8" UP TO 1 1/2"

**HYDRAULIC SEALS:**

ALL SIZES OF SEALS, U-CUPS, VEE PACKINGS,  
WIPERS, OIL - AIR & GREASE SEALS, FOR  
HIGH PRESSURE USE.

**PACKINGS:**

GLAND PACKINGS SIZES: 3/16" UP TO 3/4"

**CUTLESS BEARINGS:**

BRASS SHELLLED, RUBBER LINED BEARING OF  
DIFFERENT SIZES FOR PROPELLER SHAFT.

**AIR FILTER & LUBRICATOR:**

PRACTICAL SYSTEM FOR PROVIDING COMPLETE,  
AUTOMATIC CONTROL AND CONDITIONING OF  
COMPRESSED AIR USE IN OPERATING PNEUMATIC  
EQUIPMENT, PIPE SIZE - 1/2".

**WIRE ROPE SHEAVES:**

EXTRA HEAVY CAST IRON, SIZES UP TO 4 FT. DIA. AND  
ROPE DIA UP TO 3"

**FERRULES:**

ALUMINIUM & STEEL INTAL DIN 3093 TO  
BS. 5281 SIZE: 1/4" UP TO 2 1/2".

**THIMBLES:**

GALVANIZED TO BS 464/1.  
SIZE: 1/4" UP TO 3"

**HYDRAULIC HOSE & FITTINGS:**

FOR HYDRAULIC AND PNEUMATIC APPLICATIONS  
4 CORE, 2 CORE SIZES UP TO 1 1/4" DIA.  
AVAILABLE IN STOCK.

**TURBOCHARGERS:**

FOR CATERPILLAR AND CUMMINS DIESEL ENGINE.

**DIESEL ENGINE PARTS:**

FOR GM DETROIT DIESELS & PERKINS DIESEL  
ENGINES OF DIFFERENT MODELS.

**PIPE & CASING TONG:**

M.D. ROTARY DRILL PIPE & CASING TONG FOR  
OIL DRILLING INDUSTRY.

**HYDRAULIC CYLINDERS:**

DIFFERENT CYLINDER DESIGNS AND MOUNTINGS  
AVAILABLE, OF DIFFERENT STROKES, SIZES AND  
DIAMETERS, UP TO 4000 TONS CAPACITY.

**DIESEL PILE HAMMER:**

CAN BE USED FOR ALL TYPES OF PILE DRIVING  
WORK, I.E. STEEL AND CONCRETE PILES AS WELL AS  
STEEL SHEET PILES AND FOR PIPE PILING OFFSHORE.  
FOR SALE AND HIRE.

**HEAT EXCHANGERS:**

DIFFERENT DESIGNS AND SIZES  
AVAILABLE FOR MARINE &  
INDUSTRIAL EQUIPMENTS.

**GEAR BOXES:**

REDUCTION GEARBOXES, SPEED  
REDUCERS, OF DIFFERENT TYPES,  
MODELS AND RATIOS AVAILABLE.

**GRABS:**

HYDRAULIC, MECHANICAL AND  
STONE GRABS AVAILABLE IN ALL  
SHAPES AND SIZES.  
CAPACITY: 0.50 TO 5.00  
CU. YARD FOR HIRE AND SALE.

**HOIST CRANE:**

SINGLE GIRDER OR DOUBLE GIRDER TYPE,  
LIFTING CAPACITY 2 TONS UP TO 10 TONS.

**CHAIN BLOCK:**

COMBINED BLOCK & GEARED TROLLEY TRAVELLING  
LEFT & RIGHT LIFTING CAPACITY: 2 TONS UP TO 10  
TONS.

**HYDRAULIC PUMPS:**

DRIVEN BY ELECTRIC MOTOR AND  
DIESEL ENGINE.

**AIR COMPRESSORS:**

- FOR MARINE DIESEL ENGINES  
STARTING BY AIR, 300 CFM CAP.
- FOR FILLING DIVING CYLINDERS FOR  
BREATHING AIR, 225 BAR CAPACITY
- FOR INDUSTRIAL USE UP TO 500 CFM.
- AVAILABLE IN STOCK.

**ELECTRIC MOTORS:**

USED AND BRAND NEW. 2 POLE.  
4 POLE AND 6 POLE. 200 - 440 V.  
50 HZ.. 0.18 KW - UP TO 110 KW, 3 PH  
1000 UP TO 3000 RPM AVAILABLE IN STOCK.

**CORK GASKETS:**

SIZE: 1Mtr. X 1Mtr. THICKNESS  
1.5mm. 3mm & 5mm.

**SUBMERSIBLE PUMPS:**

DISCHARGE SIZE: 2" UP TO 10"  
FOR HIRE AND SALE.

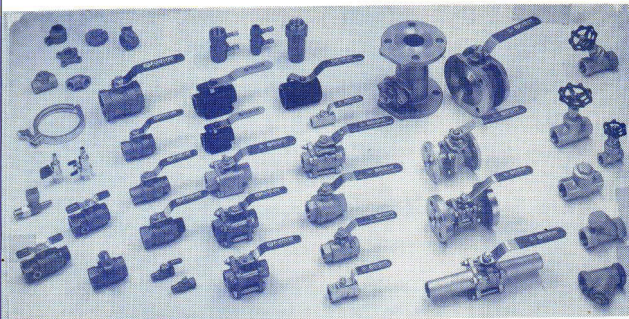
**HARD FIBER TUBES:**

COMMERCIAL GRADE HARD FIBER,  
OF DIFFERENT SIZES, SUITABLE FOR  
EXCELLENT INSULATOR

**ROCK BREAKER**

FOR ROCK BREAKING ON  
LAND AND UNDER WATER  
FOR HIRE AND SALE.





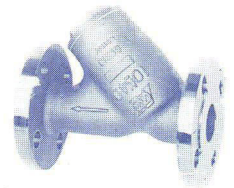
COMPLETE RANGE OF BALL VALVES



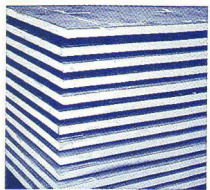
BUTTERFLY VALVES



HIGH PRESSURE GATE VALVES



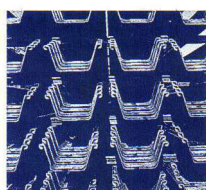
Y-PATTERN-STRAINERS



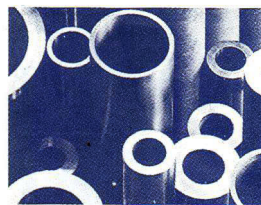
STEEL PLATES



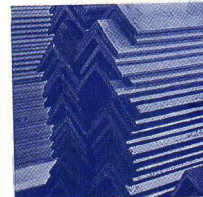
ROUND BARS



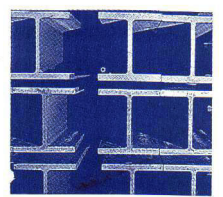
STEEL SHEET PILING



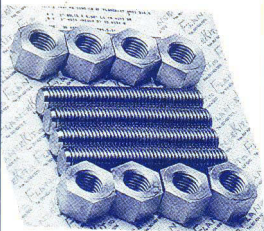
SOLID & HOLLOW CONTINUOUS CAST BRONZE



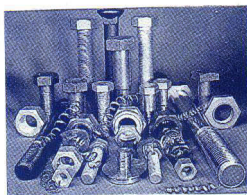
STEEL ANGLES



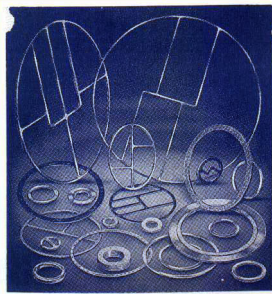
STEEL BEAMS



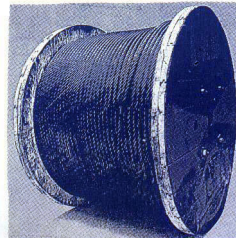
STUD BOLT & NUT



BOLTS & NUTS



GASKETS



STEEL & GALV. WIRE ROPE.



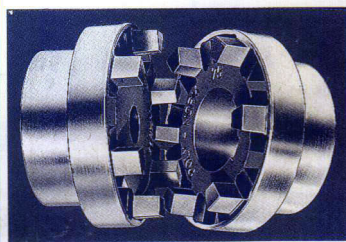
WEB SLING



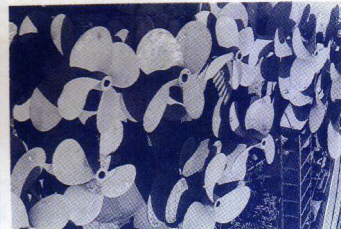
WHITE & BEARING METALS



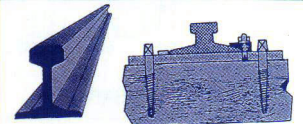
ZINC ANODES



SHAFT COUPLING



MARINE PROPELLERS



STEEL RAILWAY

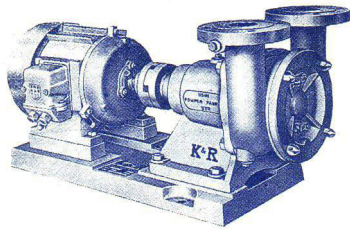


WELDING MACHINE

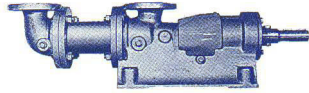


LIFTING ACCESSORIES

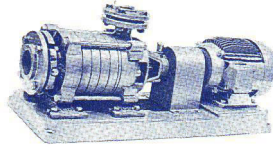




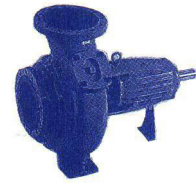
BILGE PUMP



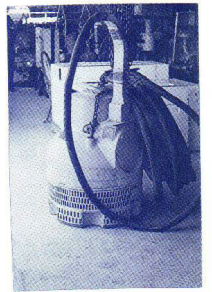
SEWAGE PUMP



MULTI-STAGE COOLING PUMP



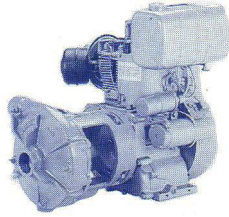
CENTRIFUGAL PUMP



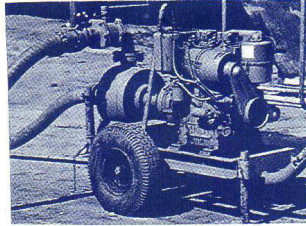
SUBMERSIBLE PUMP



24" DREDGER PUMP

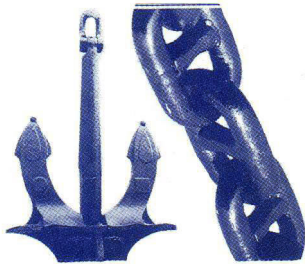


DIESEL ENGINE DRIVEN PUMP

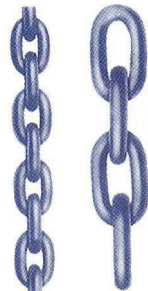


HIGH PRESSURE PUMP

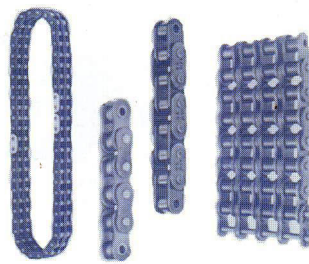
**PUMPS FOR MARINE/ INDUSTRIAL/ AGRICULTURAL USE**



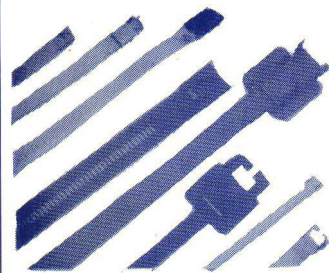
ANCHORS & CHAINS



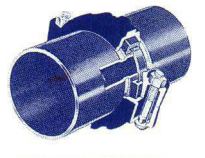
LINK CHAINS



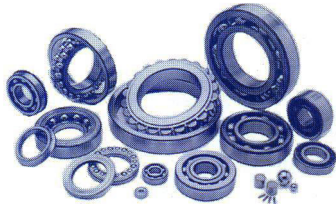
SPROCKET CHAIN



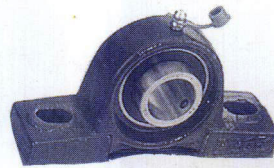
BANDIT CLAMPS



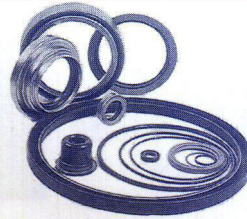
VICTAULIC PIPE COUPLING



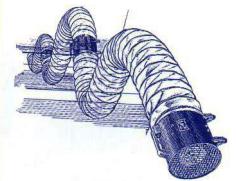
BEARINGS



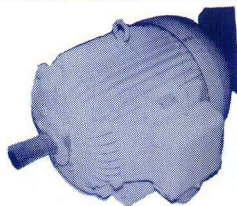
PILLOW BLOCK BEARING



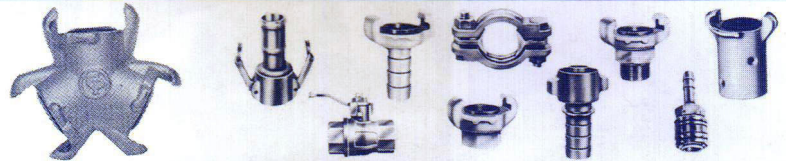
HYDRAULIC SEALS



PORTABLE FAN



ELECTRIC MOTORS



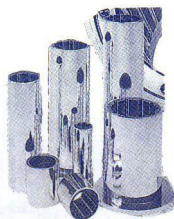
**AIR LINE HOSE FITTINGS & ACCESSORIES**



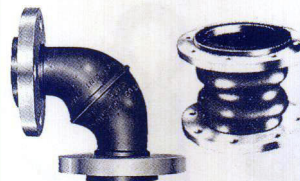
MECHANICAL SEALS



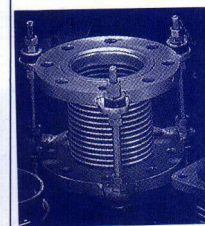
PACKINGS



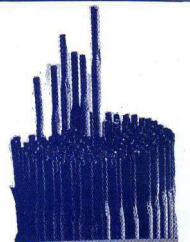
CUTLESS BEARING



FLEXIBLE RUBBER CONNECTOR.



FLEXIBLE EXPANSION JOINT



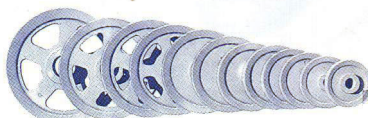
WELDING ELECTRODES.



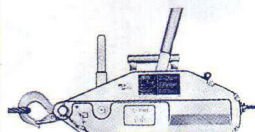
LUBRICATOR



AIR FILTER



PULLEY SHEAVES



"TIRFOR" CABLE HOIST/WINCHES



ALUMINIUM & STEEL FERRULES



GALVANIZED THIMBLE.